



## WREATHS ACROSS AMERICA DAY – DECEMBER 17, 2022

Each year, Wreaths Across America coordinates wreath-laying ceremonies at more than 3,400 locations across the United States, at sea or abroad. We remember and honor all our military veterans that have paid the ultimate sacrifice for our freedoms.

We invite you to join Wreaths Across America by sponsoring a veterans' wreath at a cemetery near you, volunteering or donating to a local sponsorship group. Please visit [WreathsAcrossAmerica.org](https://WreathsAcrossAmerica.org) to volunteer, donate, or sponsor a wreath to honor an American hero.



## TOYS FOR TOTS

Hunt Military Communities proudly supports the U.S. Marine Corps Reserve Toys for Tots program each holiday season. Donation drops off stations will be available at several HMC communities across the nation to collect presents and toys for children in need.

Toys for Tots is a 73-year-old national charitable program run by the U.S. Marine Corps Reserve that brings holiday joy to more than seven million disadvantaged children each season. HMC is proud to support this holiday tradition to give back to our communities in a safe and accessible way. The primary goal is to help bring joy to the season and send a message of hope and support to all those in need. Donations given to Toys for Tots directly impact children and families in communities throughout the country.

If you would like to make a donation or learn more about the program, please visit [ToysForTots.org](https://ToysForTots.org).

## OUR CEO'S MESSAGE

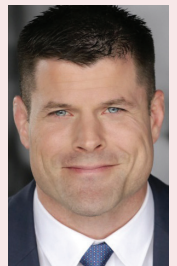
Dear HMC Residents,

We'll be celebrating the beginning of a new year in just a few short weeks. During this holiday season and throughout the year, we appreciate the service and sacrifice you and your families make. With deployments or long training missions, our Service Members miss out on many special occasions during the holiday season. In support of our families, our communities are doing special service projects this holiday season to show our gratitude for all you do day in and day out. We are also supporting those in need. Donation drop-off stations have been established at many HMC communities across the nation to collect presents and toys for needy children as part of the U.S. Marine Corps Reserve Toys for Tots program. We are also encouraging employees and residents to participate in Wreaths Across America to support their wreath-laying efforts at military cemeteries across the country. On behalf of everyone here at Hunt Military Communities, I want to take this time to wish you all a very safe and happy Holiday season and a healthy and happy 2023.

Semper Fidelis,



Brian Stann  
President and CEO  
Hunt Military Communities



505-551-3855

@KirtlandFamilyHousing

@KirtlandFamilyHousing



# COMMUNITY ANNOUNCEMENTS

Decorating is one of the best ways to get in a holiday mood, but emergency rooms see thousands of injuries involving holiday decorating every season. When decorating follow these tips:

- Keep potentially poisonous plants – mistletoe, holly berries, Jerusalem cherry and amaryllis – away from children.
- If using an artificial tree, check that it is labeled “fire-resistant.”
- If using a live tree, cut off about 2 inches of the trunk to expose fresh wood for better water absorption; remember to water it, and remove it from your home when it is dry.
- Place your tree at least 3 feet away from fireplaces, Heater vents, and other heat sources, making certain not to block doorways.
- Avoid placing breakable ornaments or ones with small, detachable parts on lower tree branches where small children can reach them.
- Only use indoor lights indoors and outdoor lights outdoors, and choose the right ladder for the task when hanging lights.
- Replace light sets that have broken or cracked sockets, frayed or bare wires, or loose connections.
- Follow the package directions on the number of light sets that can be plugged into one socket.
- Never nail, tack, or stress wiring when hanging lights, and keep plugs off the ground and away from puddles and snow.
- Turn off all lights and decorations when you go to bed or leave the house.

## IMPORTANT EVENTS

### Holiday Social

Come by the Kirtland Community Center and Maxwell Place Office, on December 15th from 3:00 PM - 5:00 PM, for a Coffee and Cocoa Bar, to celebrate the holiday season.

### Letters for Santa

Residents stop by the Kirtland Leasing Office and Maxwell Place Office to drop off their letters to Santa, from 8:00 AM to 5:00 PM. We will be accepting letters until December 16th.

### Gift Wrapping Station

Residents stop by the Kirtland Community Center and Maxwell Leasing Office to wrap presents. The station will be open from December 5th – 22nd, Monday – Thursday from 9:00 AM – 4:00 PM.

### Santa at Kirtland Family Housing

Come out to the Kirtland Family Housing Community Center, meet Santa, and eat some Christmas goodies, on December 23rd from 5:00 PM- 7:00 PM. This event is open to all KFH residents, including those in Maxwell Place. If you live in Maxwell Place please contact the office by December 21st to get your pass.

## CONTACT INFORMATION

**Office Hours:** Monday, Tuesday, Thursday, and Friday - 8:00AM to 5:00PM  
Wednesday - 10:00AM to 5:00PM

**Office Number:** 505-551-3855

**Email:** KirtlandLeasing@HuntCompanies.com

**Facebook:** @KirtlandFamilyHousing  
@MaxwellPlaceABQ



### NATIONAL PEARL HARBOR REMEMBRANCE DAY - DECEMBER 7TH



## EMPLOYEE SPOTLIGHT

### Donald Morrison

Donald is the Maintenance Director here at Kirtland Family Housing. He loves fishing and enjoys golfing. When asked what he loves the most about this job, Don said, “I enjoy working with military members.”



### YARD OF THE MONTH Joseph Cruz



### PET OF THE MONTH Taura Hoglan's pup, Blu



# 2022

# DECEMBER

SUN	MON	TUE	WED	THU	FRI	SAT
				01 Civil Air Patrol Day	02 Holiday Pet of the Month Starts Facebook	03
04	05 Daily Gift Wrapping Station Starts Kirtland Community Center & Maxwell Place Office 9 AM - 4 PM	06	07 National Pearl Harbor Remembrance Day	08	09	10
11 Holiday Pet of the Month Ends Facebook	12 Holiday Decorating Contest Starts Facebook	13	14	15 Holiday Social Kirtland Community Center & Maxwell Place Office 3 - 5 PM	16 Letters For Santa Ends Kirtland Leasing Office & Maxwell Place Office 8 AM - 5 PM	17 Wreaths Across America
18 First Night Of Hanukkah Holiday Decorating Contest Ends Facebook	19	20	21 First Day Of Winter	22 Gift Wrapping Station Ends Kirtland Community Center & Maxwell Place Office 9 AM - 4 PM	23 Come See Santa! Kirtland Community Center 5 -7 PM	24 Christmas Eve
25 Christmas Day	26 Last Night Of Hanukkah OFFICE CLOSED	27	28	29	30	31 New Year's Eve